

PLASTICS WITH THE LIVING VOICE

KATARINA DIMITRIJEVIC AKA KRAALD

PHD RESEARCHER @ DESIGN DEPARTMENT, GOLDSMITHS UoL

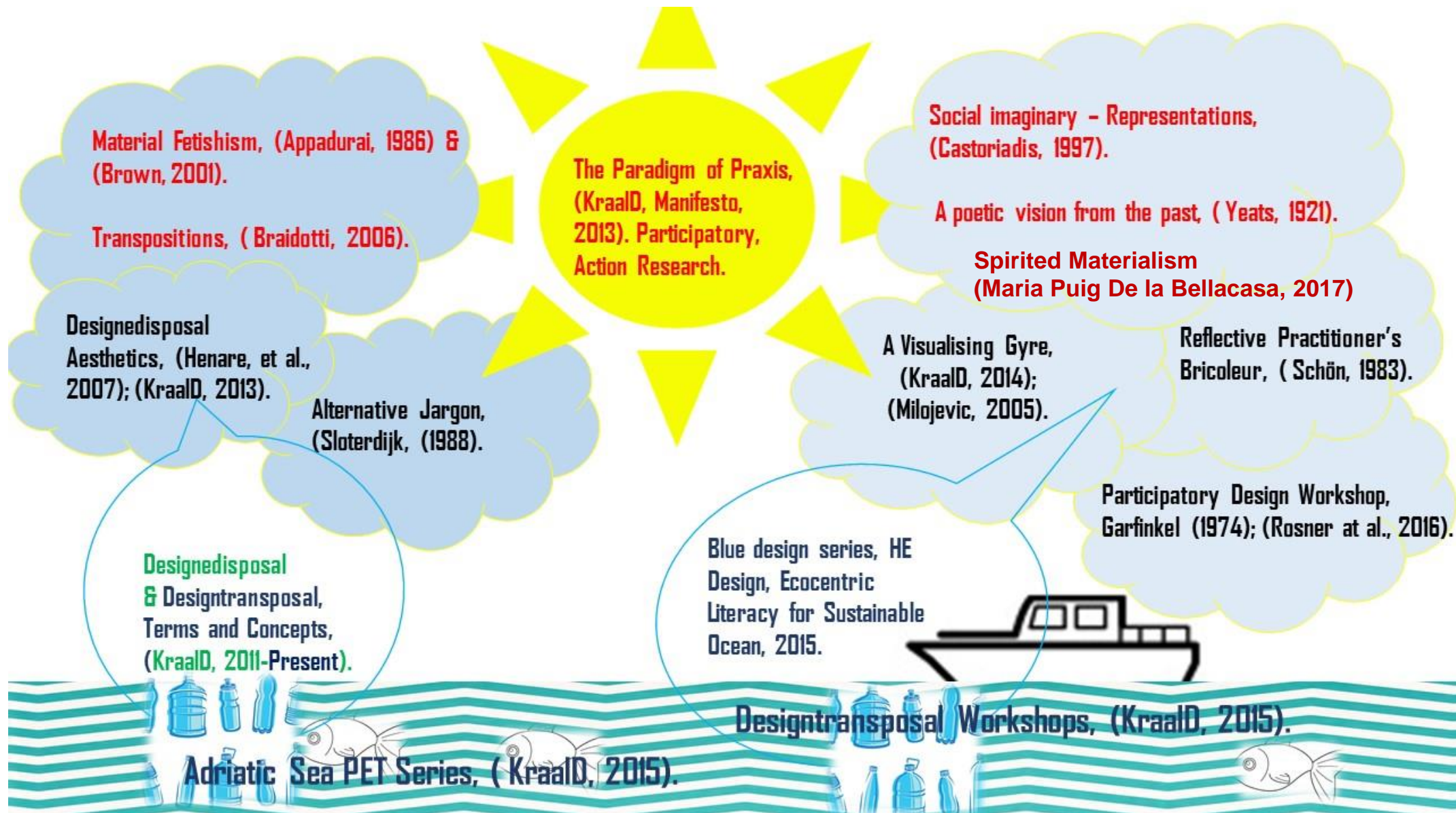
SUPERVISED BY DR MATHILDA THAM & DR JULIET SPRAKE

FUTURES OF THE REAL, POSTGRADUATE RESEARCH CONFERENCE, PANEL II: NON-HUMAN, 14 JUNE 2019, GOLDSMITHS UOL

KRAALD, FUTURES OF THE REAL, PANEL II: NON-HUMAN, 14 JUNE 2019, GOLDSMITHS UOL



PLASTICS MARINE WASTE DATA SEE: LAVENDER LAW 2017: 213; ERIKSEN ET AL., 2014: RESULTS.



KRAALD, 2018, *LANDSCAPE: METHODOLOGY, METHODS OVERVIEW AND BLUE DESIGN SERIES OUTCOMES*. ROCHESTER, UK. LEGEND: *SUN*: KRAALD EPISTEMOLOGICAL STRUCTURES. *CLOUDS IN RED*: METHODOLOGY STRUCTURES. *CLOUDS IN BLACK*: INTERPRETATIVE METHODS. *BUBBLES*: TERMS AND CONCEPTS. *SEA*: BLUE DESIGN SERIES DIWO AND DIY PROJECT OUTCOMES.

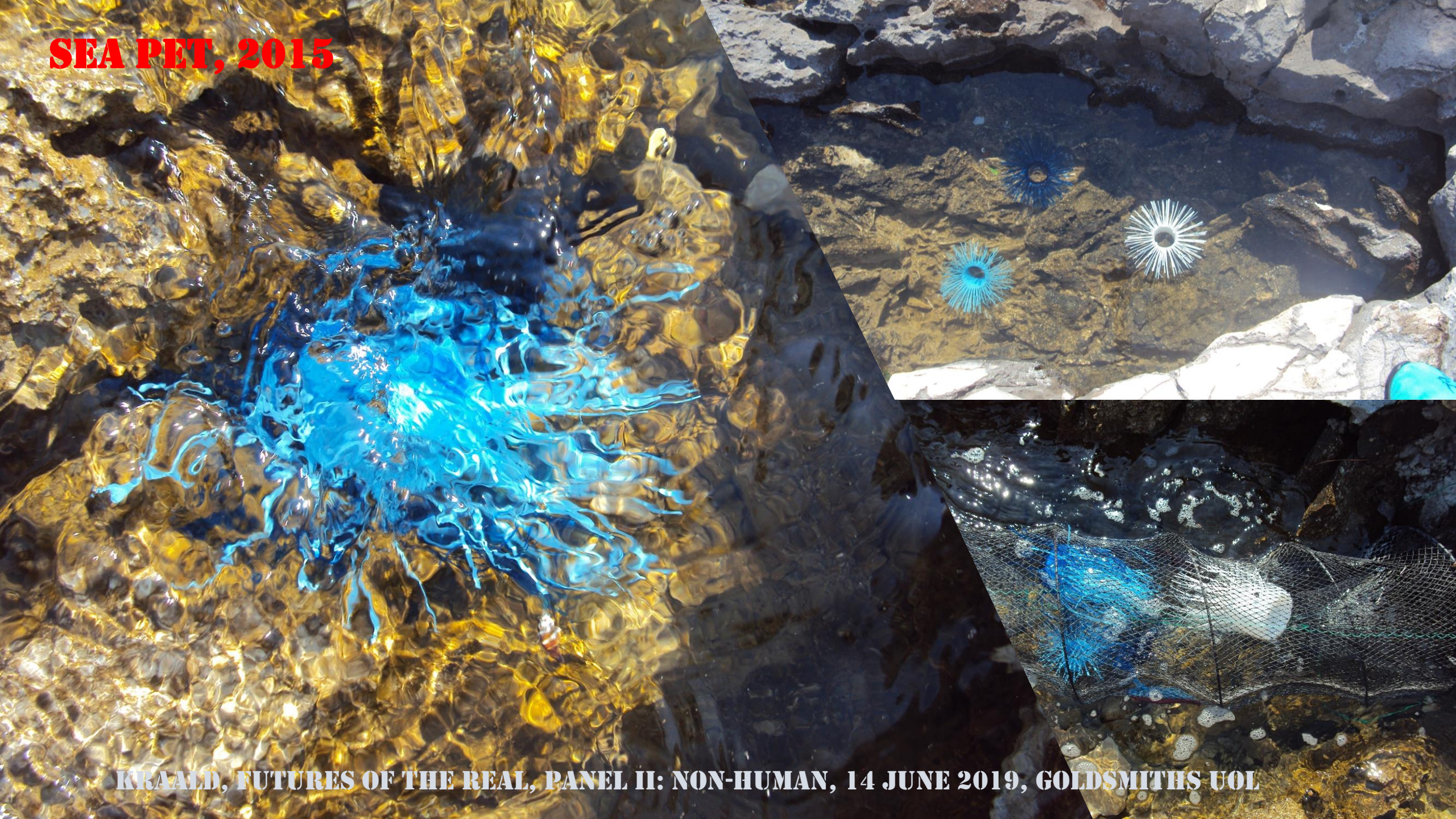
KRAALD, FUTURES OF THE REAL, PANEL II: NON-HUMAN, 14 JUNE 2019, GOLDSMITHS UOL



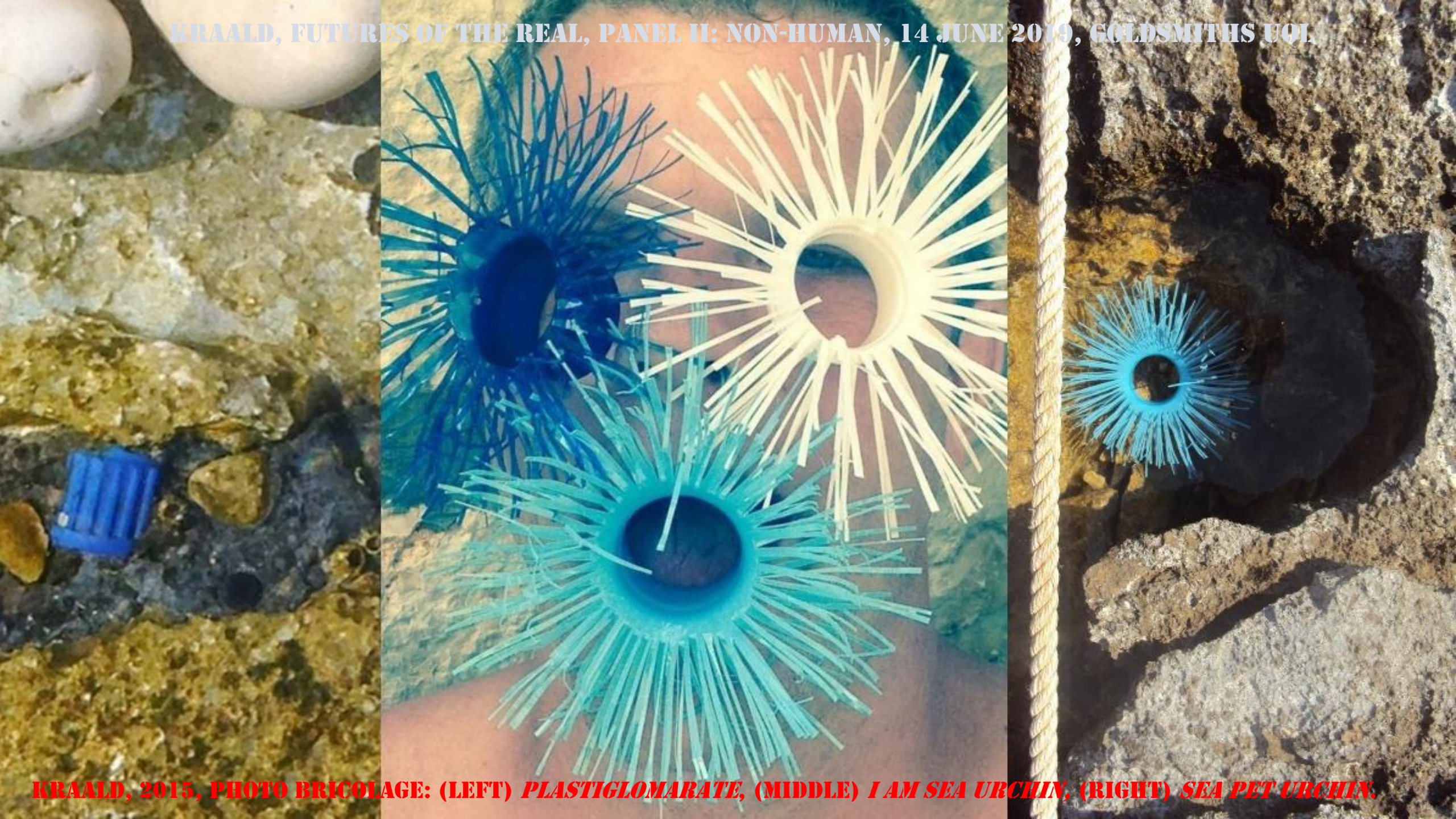
SEA PET (POLYETHYLENE TEREPHTHALATE)

A TOUGH THERMOPLASTIC RESIN USED ESPECIALLY IN THE MANUFACTURE OF PLASTIC CONTAINERS—ABBREVIATION *PET*

SEA PET, 2015



KRAALD, FUTURES OF THE REAL, PANEL II: NON-HUMAN, 14 JUNE 2019, GOLDSMITHS UOL



“I” TRASH THEREFORE “WE” ARE.

[HTTPS://KRAALD.ORG/](https://kraald.org/)